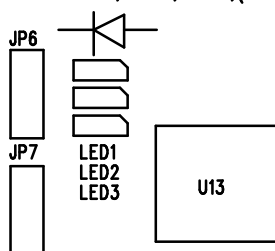


TOP SILKSCREEN

LINEAR TECHNOLOGY
DC1907A-3-SUPPORT BOARD FOR isoSPI
isoSPI SERIAL ANALYZER
DATE: 03-22-12

8. INSTALL LED1,LED2,LED3,(PANASONIC, LN1251C) AS SHOW BELOW.

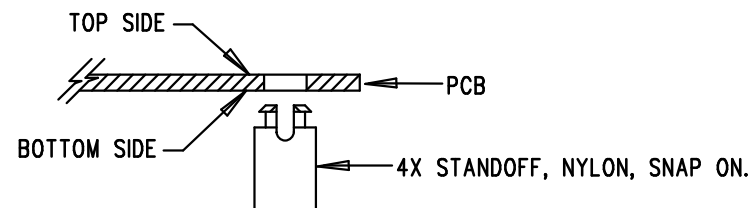


REVISION HISTORY


ECO	REV	DESCRIPTION	APP. ENG.	DATE
-	3	3RD PROTOTYPE	CUYLER L.	03-22-12

NOTES: UNLESS OTHERWISE SPECIFIED

1. WORKMANSHIP SHALL BE IN ACCORDANCE WITH IPC-A-610.
2. ASSEMBLY PROCESS SHALL INCLUDE: REFLOW SOLDER TOP SIDE SMD. MAXIMUM SOLDER TEMPERATURE IS 240 DEGREES CELSIUS.
3. PARTS TO OMIT WILL BE SPECIFIED ON THE BILL OF MATERIALS. LOCATIONS OF OMITTED PARTS SHALL BE FREE OF SOLDER. MASK THE SOLDER STENCIL WHERE SMT PARTS ARE OMITTED.
4. INSTALL SHUNTS AS SHOWN ON ASSY DRAWING.
5. DEPANELIZE BOARDS AFTER ASSEMBLY AND ROUTE-OUT THE BREAKOUT TABS ON FOUR SIDES OF THE BOARD EDGE.
6. DO NOT APPLY ANY KIND OF ASSEMBLY STAMP OR QA STAMP TO ANY BOARD.
7. INSTALL 4 STANDOFFS AT 4 LOCATIONS AS SHOWN BELOW:



APPROVALS

PCB DES.	AK	 1630 MCCARTHY BLVD MILPITAS, CA 95035 PH: (408)432-1900 www.linear.com LTC CONFIDENTIAL- FOR CUSTOMER USE ONLY		
APP ENG.	CUYLER L.			
		TITLE: TOP ASSEMBLY DRAWING isoSPI SERIAL ANALYZER		
		SIZE N/A	IC NO. SUPPORT BOARD FOR isoSPI DEMO CIRCUIT 1907A	REV. 3
SCALE = NONE		FILENAME: DC1907A-3.PCB		SHT 1 OF 1